

 NEXT 21



CT-Bone™

# What is CT-Bone?

CT-Bone is the World`s first synthetic bone graft to fuse and assimilate. Unlike other ceramics CT-Bone does not require a thermal process to increase mechanical strength. Since CT-Bone does not require sintering process, it displays better bony fusion and is dimensionally stable.

## Unique Characteristics of CT-Bone

### Material

Unsintered Calcium hydroxyapatite (HA) is the same material as our human bone.

### Fitting

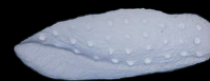
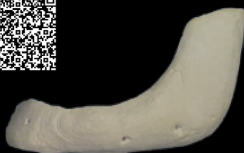
We use 3D printer to reproduce complex structure.

### Inner Structure

Continuous Pores and cavities allows cells to enter.

### Medical Expense Reimbursement

Insurance application as synthetic bone graft is possible.



First and Second Branchial Arch Syndrome

Right Lower Jaw Deformity After Reconstruction



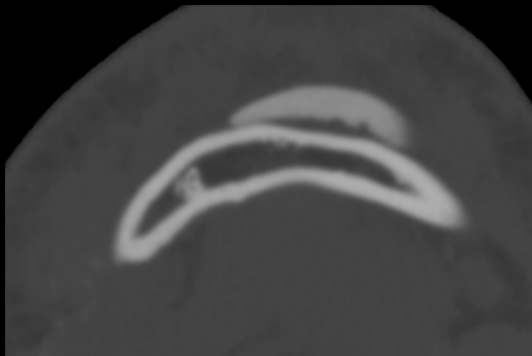
Microsomia



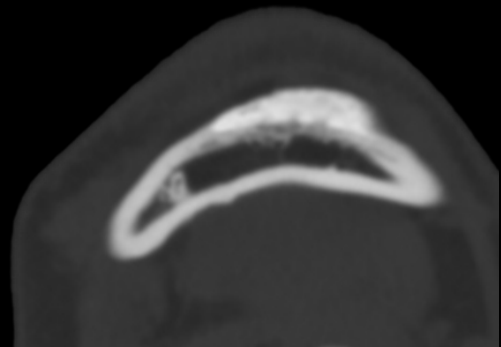
# Clinical Research

## Case 1: Hemifacial Microsomia

Post OPE



3 Years After OPE



## Case 2: Right Lower Jaw Deformity After Reconstruction

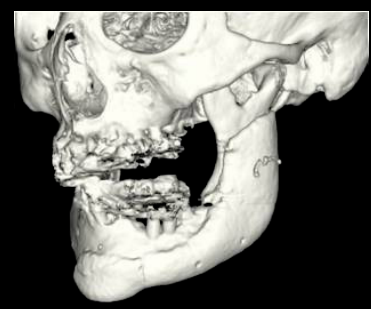
Pre OPE



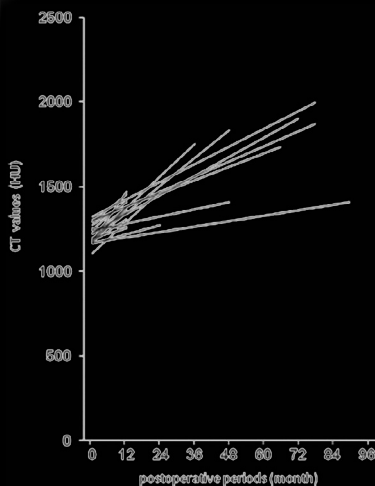
Post OPE



1 year After OPE



## Changes in CT values



Post OPE



7.3 years after OPE



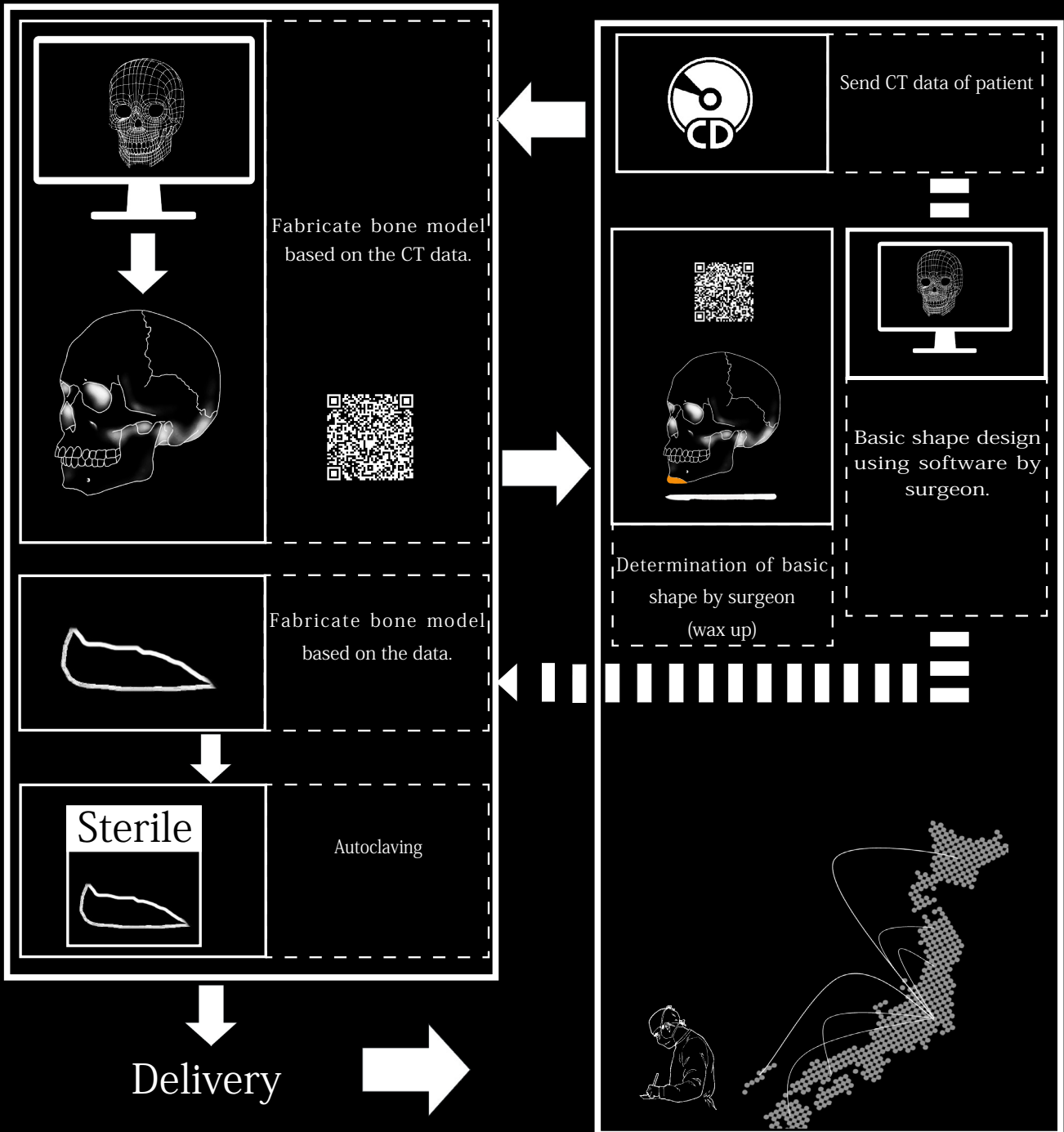
Reference: Yuki Kanno et al. Computed tomographic evaluation of novel custom-made artificial bones, "CT-Bone", applied for maxillofacial reconstruction. *Regenerative Therapy* 5(2016)1-8

# 【Flow of delivering CT-Bone™】



## Next 21

## Hospital



### NEXT 21 K.K

8F, 3-38-1 Hongo, Bunkyo-ku, Tokyo 113-0033

TEL:+81-3-5840-8830 FAX:+81-3-5840-8831

URL: <http://www.next21.info>



Distributor Agent  okada

URL: <http://www.okdms.co.jp>

For further details please check the QR codes below or visit our website <http://next21kk.wixsite.com/ctbone>



 NEXT 21